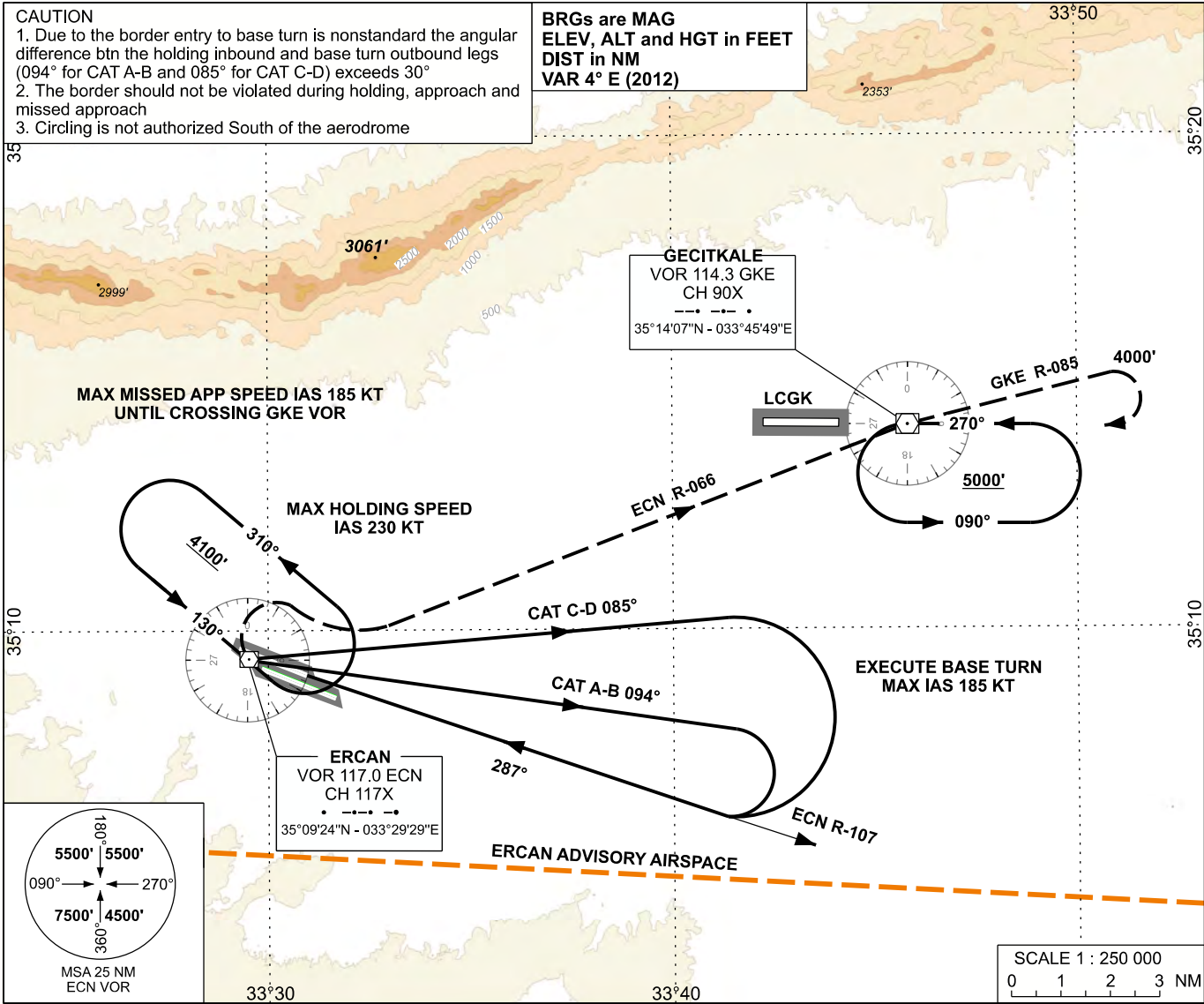


INSTRUMENT
APPROACH
CHART - ICAO

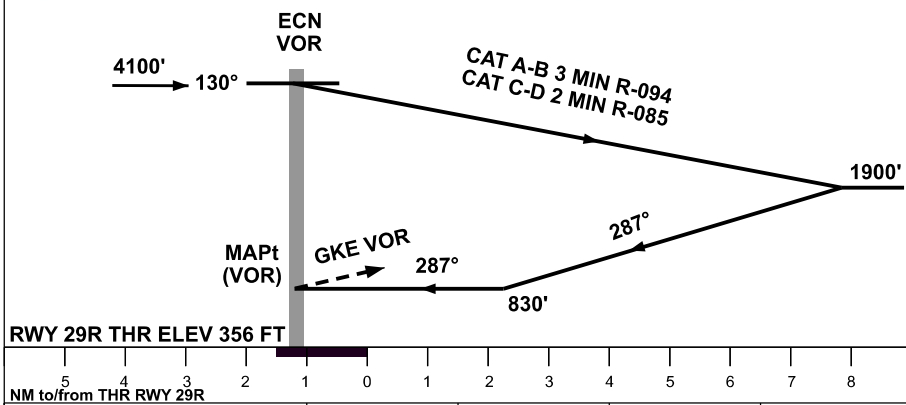
APP	127.750	AD ELEV	402 FT
TWR	120.450 - 120.250 - 120.375	TRANSITION ALTITUDE	6000 FT
ATIS	118.350		

LEFKOŞA/ERCAN
VOR
RWY 29R



MISSED APPROACH

MAXIMUM MISSED APPROACH SPEED IAS 185 KT UNTIL CROSSING GKE VOR TURN RIGHT CLIMBING 5000 FT INTERCEPT ECN R-066 PROCEED GKE VOR IF 5000 FT REACHED BY GKE VOR JOIN THE HOLDING. IF NOT, PROCEED CLIMBING VIA GKE VOR R-085 UNTIL CROSSING 4000 FT THEN TURN RIGHT CLIMBING 5000 FT PROCEED GKE VOR AND HOLD.



OCA (H)	A	B	C	D
Straight-in Approach	830' (474')			
Circling	900' (498')		1100' (698')	

CHANGE: RWY NAME, CHART REVISED